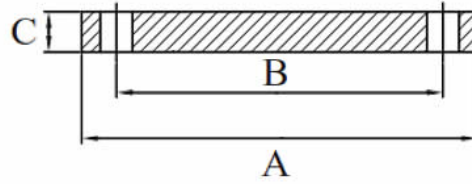


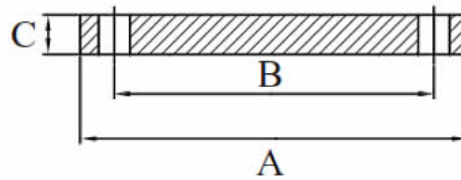
Stainless Steel Table 'E' Blind Flanges 316/316L

AAP CODE	IMPERIAL SIZE	A	B	C	BOLT SIZE	HOLE DIAMETER	NO. HOLES	APPROX KG/PC
SSFBE31625	1	115	83.0	10.6	M12	14	4	0.6
SSFBE31632	1 1/4	120	87.0	10.6	M12	14	4	0.7
SSFBE31640	1 1/2	135	98.0	10.6	M12	14	4	1.0
SSFBE31650	2	150	114.0	10.6	M16	18	4	1.4
SSFBE31665	2 1/2	165	127.0	10.6	M16	18	4	1.7
SSFBE31680	3	185	146.0	11.6	M16	18	4	2.4
SSFBE31694	4	215	178.0	14.0	M16	18	8	3.7
SSFBE31696	6	280	235.0	17.5	M20	22	8	8.0
SSFBE31698	8	335	292.0	20.0	M20	22	8	13.0



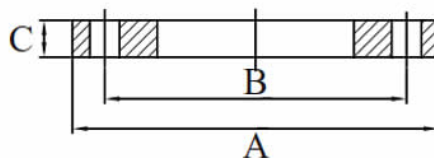
Stainless Steel Table 'D' Blind Flanges 316/316L

AAP CODE	IMPERIAL SIZE	A	B	C	BOLT SIZE	HOLE DIAMETER	NO. HOLES	APPROX KG/PC
SSFBD31694	4	215	178	10.6	M16	18	4	3.0
SSFBD31696	6	279	235	13	M16	18	8	6.49
SSFBD31698	8	337	292	13	M16	18	8	9.28
SSFBD316X25	10	406	356	16	M20	22	8	16.14

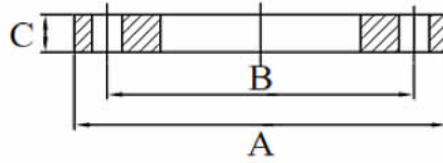


Stainless Steel Table 'E' Slip On 316/316L

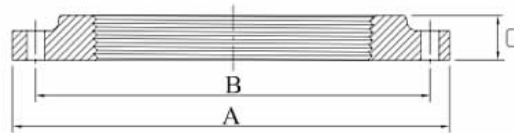
AAP CODE	IMPERIAL SIZE	A	B	C	BOLT SIZE	HOLE DIAMETER	NO. HOLES	APPROX KG/PC
SSFSE31625	1	115	83	10.6	M12	14	4	0.5
SSFSE31632	1 1/4	120	87	10.6	M12	14	4	0.6
SSFSE31640	1 1/2	135	98	10.6	M12	14	4	0.9
SSFSE31650	2	150	114	10.6	M16	18	4	1.1
SSFSE31665	2 1/2	165	127	10.6	M16	18	4	1.3
SSFSE31680	3	185	146	11.6	M16	18	4	1.8
SSFSE31694	4	215	178	14.0	M16	18	8	2.6
SSFSE31696	6	280	235	17.5	M20	22	8	4.9
SSFSE31698	8	335	292	20.0	M20	22	8	7.5



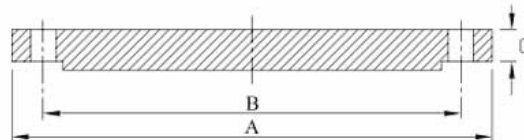
Stainless Steel Table 'D' Slip On 316/316L								
AAP CODE	IMPERIAL SIZE	A	B	C	BOLT SIZE	HOLE DIAMETER	NO. HOLES	APPROX. KG/PC
SSFSD31694	4	215	178	10.6	M16	18	4	2.1
SSFSD31696	6	280	235	17.5	M16	18	8	3.92
SSFSD31698	8	335	292	20.0	M16	18	8	5.24
SSFSD316X25	10	406	356	16	M20	22	8	8.68



Stainless Steel Table 'E' BSP Flange 316/316L								
AAP CODE	IMPERIAL SIZE	A	B	C	BOLT SIZE	HOLE DIAMETER	NO. HOLES	APPROX. KG/PC
SSFEBSP31615	1/2	95.3	66.7	15.8	M12	14	4	0.34
SSFEBSP31620	3/4	101.6	73.0	17.4	M12	14	4	0.45
SSFEBSP31625	1	114.3	82.6	18.2	M12	14	4	0.57
SSFEBSP31632	1 1/4	120.7	87.3	19.0	M12	14	4	0.79
SSFEBSP31640	1 1/2	133.3	98.4	21.4	M12	14	4	1.02
SSFEBSP31650	2	152.4	114.3	22.2	M16	18	4	1.36
SSFEBSP31665	2 1/2	165.1	127.0	26.2	M16	18	4	1.7
SSFEBSP31680	3	184.1	146.0	27.0	M16	18	4	2.27
SSFEBSP31694	4	215.9	177.8	32.7	M16	18	8	3.18



Stainless Steel C150 Flange 316/316L								
AAP CODE	IMPERIAL SIZE	A	B	C	BOLT SIZE	HOLE DIAMETER	NO. HOLES	APPROX. KG/PC
SSFB15031625	1	108	79.3	14.5	1/2	16	4	0.9
SSFB15031640	1 1/2	127.1	98.4	17.5	1/2	16	4	1.8
SSFB15031650	2	152.5	120.6	19.1	5/8	20	4	2.3
SSFB15031680	3	190.6	152.4	23.8	5/8	20	4	4.1
SSFB15031694	4	228.7	190.5	23.8	5/8	20	8	7.7
SSFB15031696	6	276.5	241.3	25.5	3/4	22	8	12



Stainless Steel C150 RF Flange 316/316L

AAP CODE	IMPERIAL SIZE	A	B	C	BOLT SIZE	HOLE DIAMETER	NO. HOLES	APPROX. KG/PC
SSFS15031620	3/4	98.5	69.8	15.9	1/2	16.0	4	0.7
SSFS15031625	1	108.0	79.3	17.5	1/2	16.0	4	0.9
SSFS15031640	1 1/2	127.1	98.4	22.3	1/2	16.0	4	1.4
SSFS15031650	2	152.5	120.6	25.5	5/8	20.0	4	2.3
SSFS15031680	3	190.6	152.4	30.2	5/8	20.0	4	3.6
SSFS15031694	4	228.7	190.5	33.4	5/8	20.0	8	5.9
SSFS15031696	6	279.5	241.3	39.7	3/4	22.0	8	8

