

The new cost effective pipe repair solution from NORMA®. Our Rapid® couplings are quick and easy to install, are readily available in Australia and they save enormous amounts of time as no special tools are required. Rapid® are a quality, cost effective pipe repair solution. Call us on 1300 CLAMPS to discuss your pipe repair needs. NORMA® will have the correct solution for you.



### RAPID® STAINLESS STEEL REPAIR COUPLINGS - CR REPAIR CLAMPS ONE PART

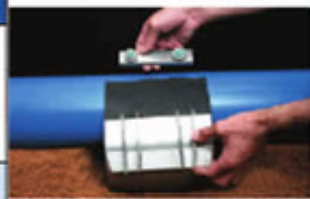
PART NO. RANGE	Size (mm)	Length	Bolts
CR1-0220-06	45 - 55	M12 X 150	X 2
CR1-0238-06	59 - 67	M12 X 150	X 2
CR1-0288-06	69 - 76	M12 X 150	X 2
CR1-0300-06	75 - 83	M12 X 150	X 2
CR1-0350-06	85 - 95	M12 X 150	X 2
CR1-0375-08	95 - 104	M12 X 200	X 2
CR1-0440-08	104 - 113	M12 X 200	X 2
CR1-0450-08	110 - 120	M16 X 200	X 2
CR1-0450-12	110 - 120	M16 X 300	X 3
CR1-0480-08	121 - 130	M16 X 200	X 2
CR1-0480-12	121 - 130	M16 X 300	X 3
CR1-0500-08	126 - 136	M16 X 200	X 2
CR1-0520-08	130 - 140	M16 X 200	X 2
CR1-0590-08	145 - 155	M16 X 200	X 2
CR1-0600-08	151 - 161	M16 X 200	X 2
CR1-0600-12	151 - 161	M16 X 300	X 3
CR1-0663-08	167 - 176	M16 X 200	X 2
CR1-0663-12	167 - 176	M16 X 300	X 3
CR1-0690-08	174 - 183	M16 X 200	X 2
CR1-0690-12	174 - 183	M16 X 300	X 3
CR1-0745-08	189 - 199	M16 X 200	X 2
CR1-0790-08	196 - 205	M16 X 200	X 2
CR1-0800-08	202 - 212	M16 X 200	X 2
CR1-0863-08	218 - 228	M16 X 200	X 2
CR1-0900-08	229 - 238	M16 X 200	X 2
CR1-0905-08	236 - 245	M16 X 200	X 2
CR1-1000-12	248 - 257	M16 X 300	X 3
CR1-1040-12	255 - 265	M16 X 300	X 3
CR1-1075-12	271 - 281	M16 X 300	X 4
CR1-1110-12	281 - 290	M16 X 300	X 4
CR1-1140-12	288 - 298	M16 X 300	X 4
CR1-1175-12	298 - 309	M16 X 300	X 4
CR1-1200-12	304 - 314	M16 X 300	X 4
CR1-1220-12	312 - 322	M16 X 300	X 4
CR1-1275-12	322 - 331	M16 X 300	X 4
CR1-1320-12	325 - 335	M16 X 300	X 4
CR1-1340-16	332 - 342	M16 X 400	X 5
CR1-1370-16	343 - 355	M16 X 400	X 5

### RAPID® STAINLESS STEEL REPAIR COUPLINGS - CR REPAIR CLAMPS TWO & THREE PART

PART NO. RANGE	Size (mm)	Length	Bolts
CR2-250/270-16	250 - 270	M16 X 400	X 10
CR2-270/290-16	270 - 290	M16 X 400	X 10
CR2-290/310-16	290 - 310	M16 X 400	X 10
CR2-310/330-16	310 - 330	M16 X 400	X 10
CR2-330/350-16	330 - 350	M16 X 400	X 10
CR2-350/370-16	350 - 370	M16 X 400	X 10
CR2-370/390-16	370 - 390	M16 X 400	X 10
CR2-390/410-16	390 - 410	M16 X 400	X 10
CR2-420/440-16	420 - 440	M16 X 400	X 10
CR2-450/470-16	450 - 470	M16 X 400	X 10
CR2-480/500-16	480 - 500	M16 X 400	X 10
CR2-490/510-16	490 - 510	M16 X 400	X 10
CR2-510/530-16	510 - 530	M16 X 400	X 10
CR2-550/570-16	550 - 570	M16 X 400	X 10
CR2-580/600-16	580 - 600	M16 X 400	X 10
CR2-600/620-16	600 - 620	M16 X 400	X 10
CR2-620/640-16	620 - 640	M16 X 400	X 10
CR3-560/590-16	560 - 590	M16 X 400	X 15
CR3-650/680-16	650 - 680	M16 X 400	X 15
CR3-690/715-16	690 - 720	M16 X 400	X 15
CR3-720/750-16	720 - 750	M16 X 400	X 15
CR3-775/805-16	775 - 805	M16 X 400	X 15



Nominal Pipe Size	Outside Diameter Range (mm)	Part Number/Length Code	Part Number	Available Clamp Lengths (mm)				
				150mm	200mm	300mm	400mm	600mm
				(X=06)	(X=08)	(X=12)	(X=16)	(X=24)
50 mm	45 - 55	CR1-0220-(X)	08230350 000					
	59 - 67	CR1-0238-(X)	08230350 001	✓	✓	✓	✓	✓
	69 - 76	CR1-0288-(X)	08230350 002					
75 mm	75 - 83	CR1-0300-(X)						
	85 - 95	CR1-0350-(X)	08230350 003	✓	✓	✓	✓	✓
	95 - 104	CR1-0375-(X)						
100 mm	104 - 113	CR1-0440-(X)						
	113 - 120	CR1-0450-(X)	08230350 004	✓	✓	✓	✓	✓
	121 - 130	CR1-0480-(X)						
125 mm	126 - 136	CR1-0500-(X)						
	130 - 140	CR1-0520-(X)		✓	✓	✓	✓	✓
	145 - 155	CR1-0590-(X)						
150 mm	151 - 161	CR1-0600-(X)						
	167 - 176	CR1-0663-(X)	08230350 005	✓	✓	✓	✓	✓
	174 - 183	CR1-0690-(X)						
180 mm	179 - 189	CR1-0710-(X)						
	189 - 199	CR1-0745-(X)		✓	✓	✓	✓	✓
	196 - 205	CR1-0790-(X)						
200 mm	202 - 212	CR1-0800-(X)						
	218 - 228	CR1-0863-(X)	08230350 006	✓	✓	✓	✓	✓
	229 - 238	CR1-0900-(X)						
225 mm	236 - 245	CR1-0905-(X)						
	248 - 257	CR1-1000-(X)		✓	✓	✓	✓	✓
	255 - 265	CR1-1040-(X)						
250 mm	271 - 281	CR1-1075-(X)						
	281 - 290	CR1-1110-(X)		✓	✓	✓	✓	✓
	288 - 298	CR1-1140-(X)						
300 mm	298 - 309	CR1-1175-(X)						
	304 - 314	CR1-1200-(X)		✓	✓	✓	✓	✓
	312 - 322	CR1-1220-(X)						
350 mm	322 - 331	CR1-1275-(X)						
	332 - 342	CR1-1340-(X)		✓	✓	✓	✓	✓
	343 - 355	CR1-1370-(X)						
	356 - 366	CR1-1400-(X)						



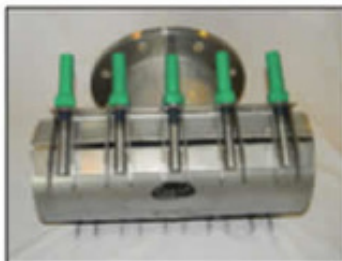


Rapid® Sewer OB Junction clamps are made from 316 Stainless Steel, they are ideally suited for new or damaged property connections on non-pressure sewer pipelines designed for a permanent sewer branch. They are made to provide the same quick-and-easy Rapid® fitting qualities. All of the Rapid® Sewer Junction Clamps are made using AS 4181 requirements\* and in accordance with ISO 9001 quality standards. They provide a simple and permanent way of connecting branch off-takes to new, broken, and renewed/ re-lined sewer pipes. The standard sewer clamps come with the off- take branch at 45 degrees, and has an PVC access coupling secured to it for solvent welded connections to uPVC pipes. The sewer clamps are made to adapt to pipe ovality and irregularities. With a fully lined rubber gasket, damaged pipes can be easily rehabilitated. Sizes range from DN 150 to DN 600mm, with off takes sizes DN 100 and DN 150mm. (Depending on host pipe) Operating pressure from -80kPA to 100kPA. Max. temp. 60 degrees C.

#### RAPID® COMMON RAPID® OB SEWER CLAMPS

PART NO.	OD RANGE	DESCRIPTION
CBJ-160/170-100	160 - 170	OB SS316 CLAMP 160 to 170 x 100 x 45 PVC
CBJ-160/165-150	160 - 165	OB SS316 CLAMP 160 to 165 x 150 x 45 PVC
CBJ-175/185-100	175 - 185	OB SS316 CLAMP 175 to 185 x 100 x 45 PVC
CBJ-175/180-150	175 - 180	OB SS316 CLAMP 175 to 180 x 150 x 45 PVC
CBJ-190/210-100	190 - 210	OB SS316 CLAMP 190 to 210 x 100 x 45 PVC
CBJ-190/210-150	190 - 210	OB SS316 CLAMP 190 to 210 x 150 x 45 PVC
CBJ-225/245-100	225 - 245	OB SS316 CLAMP 225 to 245 x 100 x 45 PVC
CBJ-225/245-150	225 - 245	OB SS316 CLAMP 225 to 245 x 150 x 45 PVC
CBJ-250/270-100	250 - 270	OB SS316 CLAMP 250 to 270 x 100 x 45 PVC
CBJ-250/270-150	250 - 270	OB SS316 CLAMP 250 to 270 x 150 x 45 PVC
CBJ-270/290-100	270 - 290	OB SS316 CLAMP 270 to 290 x 100 x 45 PVC
CBJ-270/290-150	270 - 290	OB SS316 CLAMP 270 to 290 x 150 x 45 PVC
CBJ-310/330-100	310 - 330	OB SS316 CLAMP 310 to 330 x 100 x 45 PVC
CBJ-310/330-150	310 - 330	OB SS316 CLAMP 310 to 330 x 150 x 45 PVC

OTHER SIZES AND LENGTHS AVAILABLE - CALL US ON 1300 CLAMPS



**Rapid**  
REPAIR COUPLINGS

### JNR CLAMP FULL CIRCLE GASKET GAL. PIPE

Nominal Pipe Size	Outside Diameter	Part Number	Length	Weight
15mm	21.3mm	CFW 15mm G-3	75mm	0.25 kgs
15mm	21.3mm	CFW 15mm G-6	150mm	0.5 kgs
20mm	26.7mm	CFW 20mm G-3	75mm	0.27 kgs
20mm	26.7mm	CFW 20mm G-6	150mm	0.54 kgs
25mm	33.4mm	CFW 25mm G-3	75mm	0.29 kgs
25mm	33.4mm	CFW 25mm G-6	150mm	0.58 kgs
32mm	42.2mm	CFW 32mm G-3	75mm	0.35 kgs
32mm	42.2mm	CFW 32mm G-6	150mm	0.7 kgs

### JNR CLAMP HALF CIRCLE GASKET GAL. PIPE

Nominal Pipe Size	Outside Diameter	Part Number	Length	Weight
15mm	21.3mm	CFC-084-03	75mm	0.21kgs
15mm	21.3mm	CFC-084-06	150mm	0.42 kgs
20mm	26.7mm	CFC-105-03	75mm	0.22 kgs
20mm	26.7mm	CFC-105-06	150mm	0.44 kgs
25mm	33.4mm	CFC-132-03	75mm	0.23 kgs
25mm	33.4mm	CFC-132-06	150mm	0.46 kgs
32mm	42.2mm	CFC-160-03	75mm	0.24 kgs
32mm	42.2mm	CFC-160-06	150mm	0.48 kgs
40mm	48.3mm	CFC-190-03	75mm	0.43 kgs
40mm	48.3mm	CFC-190-06	150mm	0.86 kgs
50mm	60.3mm	CFC-238-03	75mm	0.44 kgs
50mm	60.3mm	CFC-238-06	150mm	0.88 kgs
65mm	73.0mm	CFC-300-03	75mm	0.50 kgs
65mm	73.0mm	CFC-300-06	150mm	1.00 kgs
75mm	88.9mm	CFC-350-03	75mm	0.53 kgs
75mm	88.9mm	CFC-350-06	150mm	1.06 kgs
100mm	114.3mm	CFC-450-03	75mm	0.64 kgs
100mm	114.3mm	CFC-450-06	150mm	1.28 kgs

### JNR CLAMP FULL CIRCLE GASKET COPPER PIPE

Nominal Pipe Size	Outside Diameter	Part Number	Length	Weight
15mm	12.7mm	CFW 15mmC-3	75mm	0.22 kgs
15mm	12.7mm	CFW 15mmC-6	150mm	0.44 kgs
20mm	19.05mm	CFW 20mmC-3	75mm	0.25 kgs
20mm	19.05mm	CFW 20mmC-6	150mm	0.5 kgs
25mm	25.4mm	CFW 25mmC-3	75mm	0.27 kgs
25mm	25.4mm	CFW 25mmC-6	150mm	0.54 kgs
32mm	31.75mm	CFW 32mmC-3	75mm	0.29 kgs
32mm	31.75mm	CFW 32mmC-6	150mm	0.54 kgs
40mm	38.1mm	CFW 40mmC-3	75mm	0.32 kgs
40mm	38.1mm	CFW 40mmC-6	150mm	0.66 kgs



**Rapid**  
REPAIR COUPLINGS



The new cost effective pipe repair solution from NORMA®. Larger pipe sizes available on request  
 Tapping Saddle width DN15-DN25mm BSP = 130mm, DN32-DN50mm BSP = 150mm  
 Material : 316 Stainless Steel



Normal Pipe Size Inch mm	Suit Pipe Outside Dia Range (mm)	Part Number. Lip Seal Full Rubber Lining	Available Clamp Lengths (mm)				
			3/4" (20mm)	1" (25mm)	1 1/4" (32mm)	1 1/2" (40mm)	2" (50mm)
3" 75 mm	75-90	CT2-75/90 x X	✓	✓	✓	✓	✓
3" 75 mm	88-108	CT2-88/108 x X	✓	✓	✓	✓	✓
4" 100 mm	110-135	CT2-110/135 x X	✓	✓	✓	✓	✓
5" 125 mm	135-160	CT2-135/160 x X	✓	✓	✓	✓	✓
6" 150 mm	160-190	CT2-160/190 x X	✓	✓	✓	✓	✓
7" 175 mm	190-220	CT2-190/220 x X	✓	✓	✓	✓	✓
8" 200 mm	210-240	CT2-210/240 x X	✓	✓	✓	✓	✓
9" 225 mm	240-270	CT2-240/270 x X	✓	✓	✓	✓	✓
10" 250 mm	270-300	CT2-270/300 x X	✓	✓	✓	✓	✓
11" 275 mm	300-330	CT2-300/330 x X	✓	✓	✓	✓	✓
12" 300 mm	330-360	CT2-330/360 x X	✓	✓	✓	✓	✓
13" 350 mm	360-390	CT2-360/390 x X	✓	✓	✓	✓	✓
14" 375 mm	390-420	CT2-390/420 x X	✓	✓	✓	✓	✓
15" 375 mm	420-450	CT2-420/450 x X	✓	✓	✓	✓	✓
16" 400 mm	450-480	CT2-450/480 x X	✓	✓	✓	✓	✓
18" 450 mm	490-520	CT2-490/520 x X	✓	✓	✓	✓	✓



CLAMPS TO SUIT OD'S			FLANGED OFFTAKES			
Sizes	through to	Sizes	Table D 80 mm	Table D 100 mm	Table D 150 mm	Table D 200 mm
100mm	-	150mm	✓	✓	✓	✓
150mm	-	200mm	✓	✓	✓	✓
200mm	-	250mm	✓	✓	✓	✓
250mm	-	300mm	✓	✓	✓	✓
300mm	-	350mm	✓	✓	✓	✓
350mm	-	400mm	✓	✓	✓	✓
400mm	-	450mm	✓	✓	✓	✓
450mm	-	500mm	✓	✓	✓	✓
500mm	-	550mm	✓	✓	✓	✓
550mm	-	600mm	✓	✓	✓	✓
600mm	-	650mm	✓	✓	✓	✓

## RAPID® OTHER PRODUCTS

The new cost effective pipe repair solution from NORMA®. Our Rapid® couplings are quick and easy to install, are readily available in Australia and they save enormous amounts of time as no special tools are required. Rapid® are a quality, cost effective pipe repair solution. Call us on 1300 CLAMPS to discuss your pipe repair needs. NORMA® will have the correct solution for you.



**Rapid®**  
REPAIR COUPLINGS