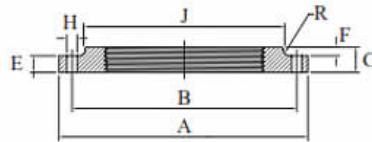


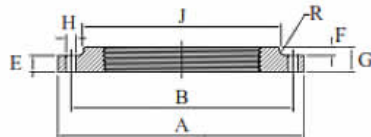
Forged Steel Plate Flange BS 10 (Table D - Screwed Gal)

AAP CODE	SIZE IMPERIAL	A	B	J	E	F	G	H	BOLT SIZE	NUMBER HOLES	RADIUS OF BOSS	APPROX. KG/PC
SFD94G	4	215.9	177.8	139.7	9.5	19.0	28.5	18	M16	4	9.5	2.6
SFD96G	6	279.4	234.9	196.8	12.7	19.0	31.7	18	M16	8	9.5	4.8



Forged Steel Plate Flange BS 10 (Table E - Screwed Gal)

AAP CODE	IMPERIAL SIZE	A	B	J	E	F	G	H	BOLT SIZE	NUMBER OF HOLES	RADIUS OF BOSS	APPROX. KG/PC
SFE15G	1/2	95.3	66.7	38.1	6.3	9.5	15.8	14	M12	4	6.3	0.34
SFE20G	3/4	101.6	73.0	44.5	6.3	11.1	17.4	14	M12	4	6.3	0.45
SFE25G	1	114.3	82.6	52.4	7.1	11.1	18.2	14	M12	4	6.3	0.57
SFE32G	1 1/4	120.7	87.3	57.0	7.9	11.1	19.0	14	M12	4	6.3	0.79
SFE40G	1 1/2	133.3	98.4	69.9	8.7	12.7	21.4	14	M12	4	6.3	1.02
SFE50G	2	152.4	114.3	79.4	9.5	12.7	22.2	18	M16	4	6.3	1.36
SFE65G	2 1/2	165.1	127.0	92.9	10.3	15.9	26.2	18	M16	4	6.3	1.7
SFE80G	3	184.1	146.0	111.9	11.1	15.9	27.0	18	M16	4	6.3	2.27
SFE94G	4	215.9	177.8	139.7	13.7	19.0	32.7	18	M16	8	9.5	3.18



Temperature-Pressure Ratings for Carbon Steel Plate Flanges

"Flange table"	Pressure, kPa												Maximum hydrostatic test pressure kPa
	Temperature, °C												
	- 18 to 120	- 50 to 232	250	275	300	325	350	375	400	425	450	475	
D		700	650	600	570	550	500	450	400	350			1 050
C	1 200												1 800
E		1 400	1 300	1 200	1 100	1 000	950	900	800	700			2 100
F		2 100	2 000	1 800	1 700	1 600	1 400	1 300	1 200	1 100			3 150
H		3 500	3 300	3 100	2 900	2 600	2 400	2 000	2 000	1 700	1 300	900	5 250
J		4 800	4 600	4 300	4 000	3 700	3 400	3 100	2 700	2 400	1 900	1 300	7 200
K		6 200	5 900	5 500	5 100	4 700	4 300	3 900	3 500	3 100	2 400	1 600	9 300
R		8 300	7 900	7 400	6 800	6 300	5 800	5 200	4 700	4 200	3 200	2 200	12 450
S		12 400	11 800	11 100	10 300	9 500	8 700	7 900	7 100	6 300	4 800	3 300	18 600
T		19 300	18 400	17 200	16 000	14 700	13 500	12 200	11 000	9 800	7 500	5 100	28 950