

FORKLIFT ACCESSORIES



Fork Extensions TSFT5

Welded Steel Construction

Fits onto forks up to 50mm thick

Steel Retaining strap prevents for extensions from sliding off forks during use.

Specials made to order to suit most fork lifts.

Features	Specifications
Fork Length - Extended	1524mm
Fork Length - Minimum	1016mm
Fork Width Fit	127mm
Weight - Pair	49kg



Fork Extensions TSFT6

Welded Steel Construction

Fits onto forks up to 50mm thick

Steel Retaining strap prevents for extensions from sliding off forks during use.

- Specials made to order to suit most fork lifts.

Features	Specifications
Fork Length - Extended	1830mm
Fork Length - Minimum	1220mm
Fork Width Fit	152mm
Weight - Pair	63kg

Telescopic Fork Mounted Jibs NLB6430

Welded Steel Construction

Fits onto forks up to 50mm thick



Features	Specifications
Fork Length - Extended	3500mm
Fork Length - Minimum	755mm
Capacity - Retracted	3 Tonnes
Capacity - Fully Extended	640kg

Drum Lifter SDL 1

Designed for standard 205 litre steel drums, the fully automatic clamping action enables safe and precise placement of drums without the operator having to leave the Drivers seat.

The Support Arms are adjustable to ensure secure clamping. The drum is gripped by pushing the arms against the drum centre and driving forward with the Forklift.

The arms will engage around the drum and lock under the rolling hoop when raised. The heavier the load, the tighter the grip becomes.

To release the drum, simply lower the drum onto ground level and reverse the Forklift.

The finish on the Drum Lifter is Zinc Plated steel.



SPECIFICATIONS:

- Safe Working Load (SWL) 500kg
- Unit Weight 100kg
- Load Centre 1375mm
- HCG 760mm
- VCG -40mm
- Pocket Size 185 x 60mm
- Pocket Centres 420mm



Wheelie Bin Tipper NWB-T

Suitable for emptying 240 litre plastic wheelie bins.

The bin is wheeled into the Tipper and secured with safety chains.

The 180 degree tipping operation is simple and safe with the operator never having to leave the seat during the tipping cycle.

Available for one (1) or two (2) plastic wheelie bins.

The finish on the Wheelie Bin Tipper is enamel painted.



Type	Number of Bins	SWL (kg)	Fork Pocket Size (mm)	Fork Pocket Centres (mm)	Load Centre (mm)	Unit Weight (kg)
NWB-T1	1	500	165 x 65	340	1200	100
NWB-T2	2	1000	165 x 65	340	1200	150

RPC Carriage Mounted Roll Prong

Carriage Mounted Roll Prongs suitable for carpet, vinyl, fabric or similar products.

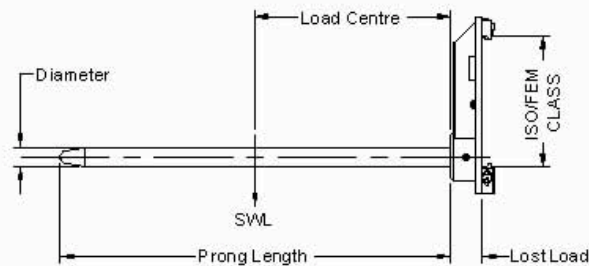
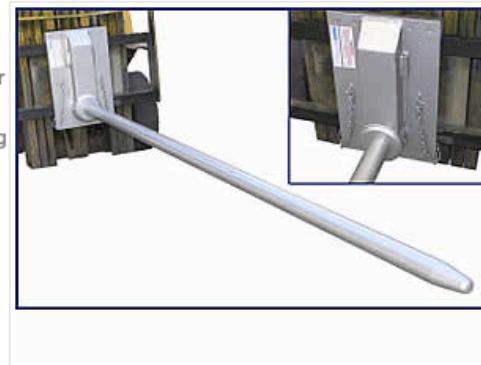
Units are available for Class II, III and IV Forklift carriages, along with pin mounted.

All "QR" model Roll Prongs feature "Quick Release" lower Carriage Hooks and a spring loaded locating pin for easy installation.

Prongs are manufactured from high tensile steel and can be made to any length.

The 'lost load' on the Class II Roll Prong is 100mm and on the Class III Roll Prong is 200mm. For Class IV or V mountings, please ask for drawings of mounting plate designs and specifications.

The standard finish on all Roll Prongs is painted enamel.



Type	Mounting Class	Diameter (mm)	Prong Length (mm)	SWL (kg)	Load Centre (mm)	Weight (kg)
RPC-QR2-40-1200	Class II	40	1200	200	600	63
RPC-QR2-50-1800	Class II	50	1800	250	900	79
RPC-QR2-60-2800	Class II	60	2800	340	1400	113
RPC-QR2-70-2800	Class II	79	2800	510	1400	135
RPC-QR2-80-2800	Class II	80	2800	850	1400	166
RPC-QR3-70-2800	Class III	70	2800	510	1400	190
RPC-QR3-80-2800	Class III	80	2800	850	1400	220
RPC-QR3-100-2800	Class III	100	2800	1700	1400	282
RPC-BH4-125-1200	Class IV	125	1200	6500	600	280
RPC-BH4-125-2800	Class IV	125	2800	2785	1400	440
RPC-BH4-150-1200	Class IV	150	1200	10,000	600	360
RPC-BH4-150-2800	Class IV	150	2800	4285	1400	565
RPC-PM-200-1200	Pin Mount	200	1200	13,000	600	1400

Bin Tipper FBT-SH

The Type FBT-SH Forward Bin Tipper is ideal for handling and emptying bins in agricultural and manufacturing industries.

This slip-on attachment is fitted in seconds, requiring only a single hydraulic function. The purpose built hydraulic sequencing valve eliminates the potential to drop a bin (rotation will not commence until bin is correctly restrained), while the gentle action of the clamp arms prevents damage to the bins.

The standard FBT-SH unit will suit bins up to 1200mm square, with height range of 675 to 925mm.

Non standard size and capacity attachments can be manufactured. This unit is also available in carriage mounted applications.

SPECIFICATIONS:

- Lost Load: 300mm
- Unit Weight: 290kg
- SWL: 1000kg
- Max Tine Size: 155 x 55mm

