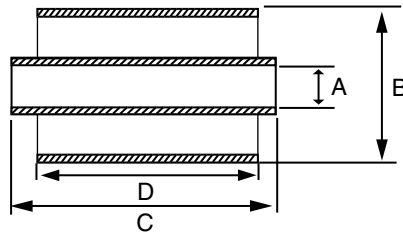
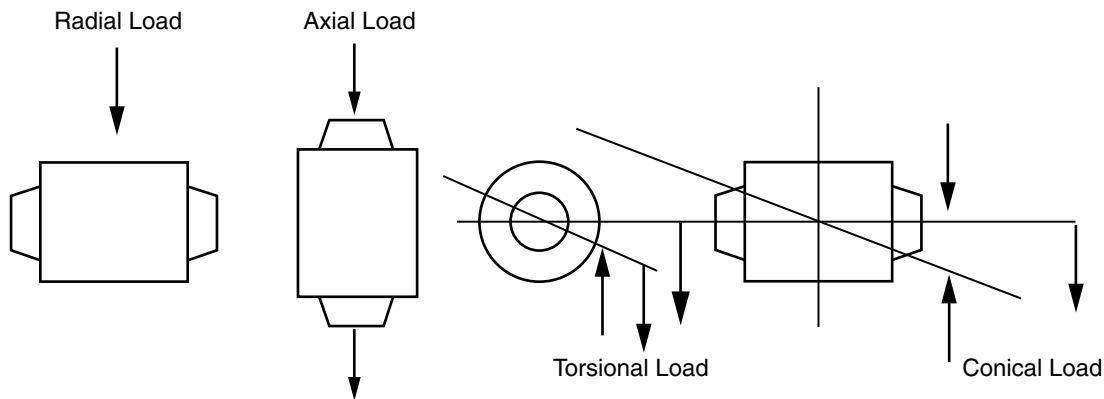


FLEXIBLE BEARINGS



Part No.	NOMINAL DIMENSIONS				RADIAL		TORSIONAL	AXIAL		CONICAL	Weight Kg
	A	B	C	D	STATIC LOAD Kg	DEF mm	MAX ANGLE DEGREES	STATIC LOAD Kg	DEF mm	MAX ANGLE DEGREES	
M561418	8	32	23.2	18	30	0.5	35	20	1.5	6	0.04
M561205	10	22	17	15	40	0.3	25	15	0.8	6	0.02
M561207	10	22	30	25	100	0.2	20	40	1.5	3	0.03
M561613	10	27	22	17	65	0.5	30	25	1.5	3	0.03
A1422	10	42.3	50	35							
A2055	10.1	29.2	54.7	50.4	-	-	-	-	-	-	0.1
A2053	10.2	31	40	26.1	-	-	-	-	-	-	0.08
A2058	10.2	31	50	32.8	-	-	-	-	-	-	0.1
M561213	12	25	34	30	120	0.2	20	50	0.8	3	0.05
M561250	12	25	54	50	550	0.3	20	45	0.6	1	0.09
A1639	12.0	55.2	54.2	43.0	-	-	-	-	-	-	0.2
A1928	12.3	55.2	76	60							
S241	12.7	25.4	73.1	64.3	-	-	-	-	-	-	0.1
S19	12.7	27.0	50.8	44.5	-	-	-	-	-	-	0.1
S229	13.0	52.2	78	64.0	-	-	-	-	-	-	0.3
A1311	14.3	35.0	45.0	37.5	-	-	-	-	-	-	0.5
S154	14.3	30.1	69.7	63.5	-	-	-	-	-	-	0.2
S284	15.8	33.1	63.9	60.0	-	-	-	-	-	-	0.2
M561312	16	32	28	25	140	0.2	20	50	1.6	5	0.07
A1869	18.3	55.4	60	45.5							
A1870	18.5	51.1	60	45.0							
M561384	20	38	42	38	230	0.2	25	75	1.0	3	0.2
M561335	20	38	59	55	300	0.15	20	150	1.0	2	0.2
M561404	20	42	42	38	300	0.3	25	90	1.5	4	0.2
M561411	24	48	44	40	160	0.3	20	110	1.5	2	0.2
M561400	24	48	58	50	350	0.3	20	120	2.0	2	0.3
M561409	28	48	66	60	400	0.15	20	190	1.1	2	0.3
M561503	32	52	66	60	600	0.15	20	260	2.2	1	0.4
M561701	42	78	86	80	1000	0.5	10	200	1.6	1	1.0
M561702	42	78	140	130	2000	0.6	20	400	2.0	1	1.7



All properties nominal, contact Mackay for Technical advice

All Dimensions in Millimetres

INSTALLATION TOLERANCES & BRACKET LIMITS

RIGID HOUSING INTERFERENCE FIT

O.D Bush Dia (mm)	Housing Limit (mm)
UP to 22.0	-0.038 - 0.063
23.7 - 39.6	-0.050 - 0.076
41.2 - 50.8	-0.063 - 0.088
52.3 - 78.0	-0.076 - 0.113
80 - 125	-0.076 - 0.127

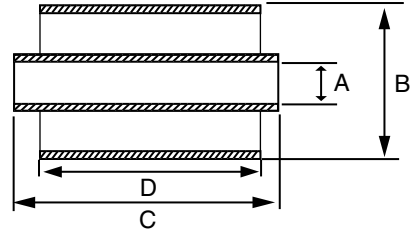
ROLLED SPRING EYE

O.D Bush Dia (mm)	Spring Eye Limit (mm)
UP to 22.0	-0.25 - 0.50
23.7 - 28.5	-0.40 - 0.66
30.1 - 34.9	-0.63 - 0.88
36.4 - 41.2	-0.71 - 0.96
42.8 - 53.9	-0.86 - 1.11
55.5 - 70.0	-1.01 - 1.39

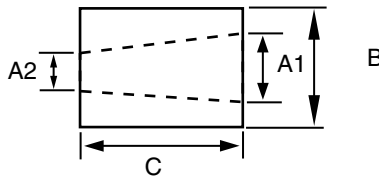
All properties nominal, contact Mackay for Technical advice

All Dimensions in Millimetres

© Mackay Consolidated Industries Pty Ltd 2015
www.mackayrubber.com.au

TPH1**TPH17****TPH21****TPH30****TPH31****TPH36**

Part No.	Nominal dimensions				Description	Weight Kg
	A	B	C	D		
TPH1	28.2	76.0	82.5	63.0	Rubber / Steel Bush	1.6
TPH17	28.2	73.0	82.5	51.0	" "	1.3
TPH21	25.6	76.0	57.0	44.0	" "	1.1
TPH30	25.4	70.0	117.5	108.0	" "	1.8
TPH31	22.2	60.0	79.0	76.0	" "	0.9
TPH36	28.2	70.0	82.5	56.0	" "	1.1

TPL14

Part No.	Nominal dimensions				Description	Weight Kg
	A1	A2	B	C		
TPL14	*50.7	42.0	105	71.0	Rubber / Steel Bush	2.1

* Large End Taper

SPECIFICATIONS

Part No.	Radial Load			
	Constant Load Tonne	Def mm	Occasional Load Tonne	Def mm
TE34	14.0	1.3	33.0	2.7
TE38	14.0	1.3	33.0	2.7
TPH1	2.5	0.8	5.0	1.6
TPH17	-	-	-	-
TPH21	1.5	-	-	-
TPH30	6.0	-	-	-
TPH31	-	-	-	-
TPH36	-	-	-	-
TPL14	-	-	-	-

All properties nominal, contact Mackay for Technical advice

All Dimensions in Millimetres