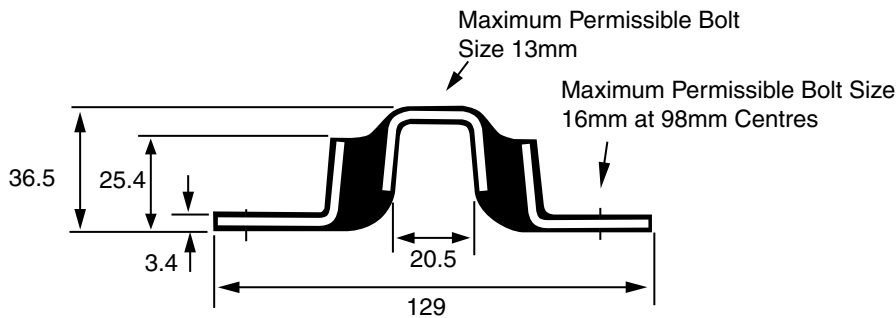
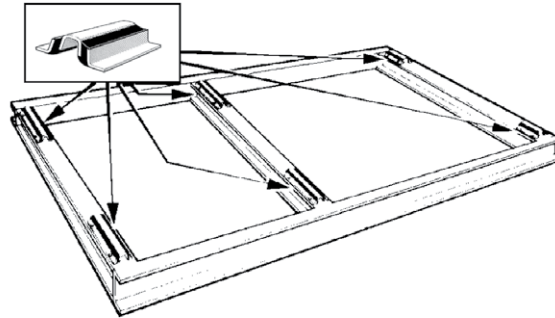
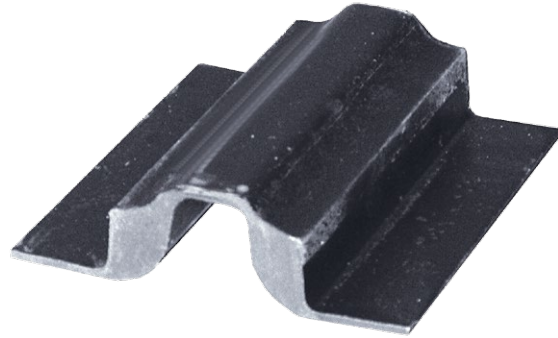


DOUBLE SHEAR ISOLATORS

This isolator is particularly versatile and suitable for all types of machinery and structures. The M100 is well suited to installations that require the isolator to resist the sideways pull with belt driven loads and to maintain the centre distance for gears, without a loss of isolation efficiency in the vertical direction. The isolator consists of three steel members which are securely bonded to two sections of rubber in its most effective manner i.e. in shear with progressively increasing compression. The M100 mount is available in 50 and 60 Duro. The mounting holes can be drilled to suit your own individual requirements. The isolator can be bolted or welded to a separate retention plate if preferred, but SECURE fixing is generally recommended.

IMPORTANT ; The M100 isolator should be securely fixed to the foundations before the load is applied to prevent the mount spreading and therefore , not allowing it to obtain the correct deflections.

The standard lengths are 150mm and 300mm. If you require a load rating that calls for smaller lengths it is an easy matter for you to cut to the required size.



LOAD RATING

Part No. & Duro	Length mm						As measured at 3mm deflection
	25	50	75	100	150	300	
M10050	10Kg	26Kg	40Kg	58Kg	75Kg	160Kg	
M10060	22Kg	60Kg	87Kg	125Kg	170Kg	340Kg	

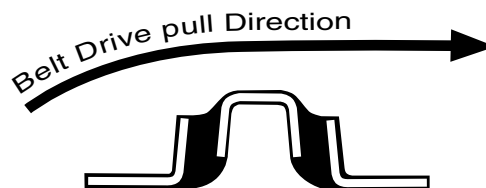
WEIGHT PER LENGTH

Part No.	150mm	300mm
M10050	0.8Kg	1.5Kg
M10060	0.8Kg	1.5Kg

COLOUR CODE

Duro	Colour
50	Yellow
60	White

The M100 isolators are ideal for belt drives etc. and should be installed with tension as shown



All properties nominal, contact Mackay for Technical advice

All Dimensions in Millimetres